

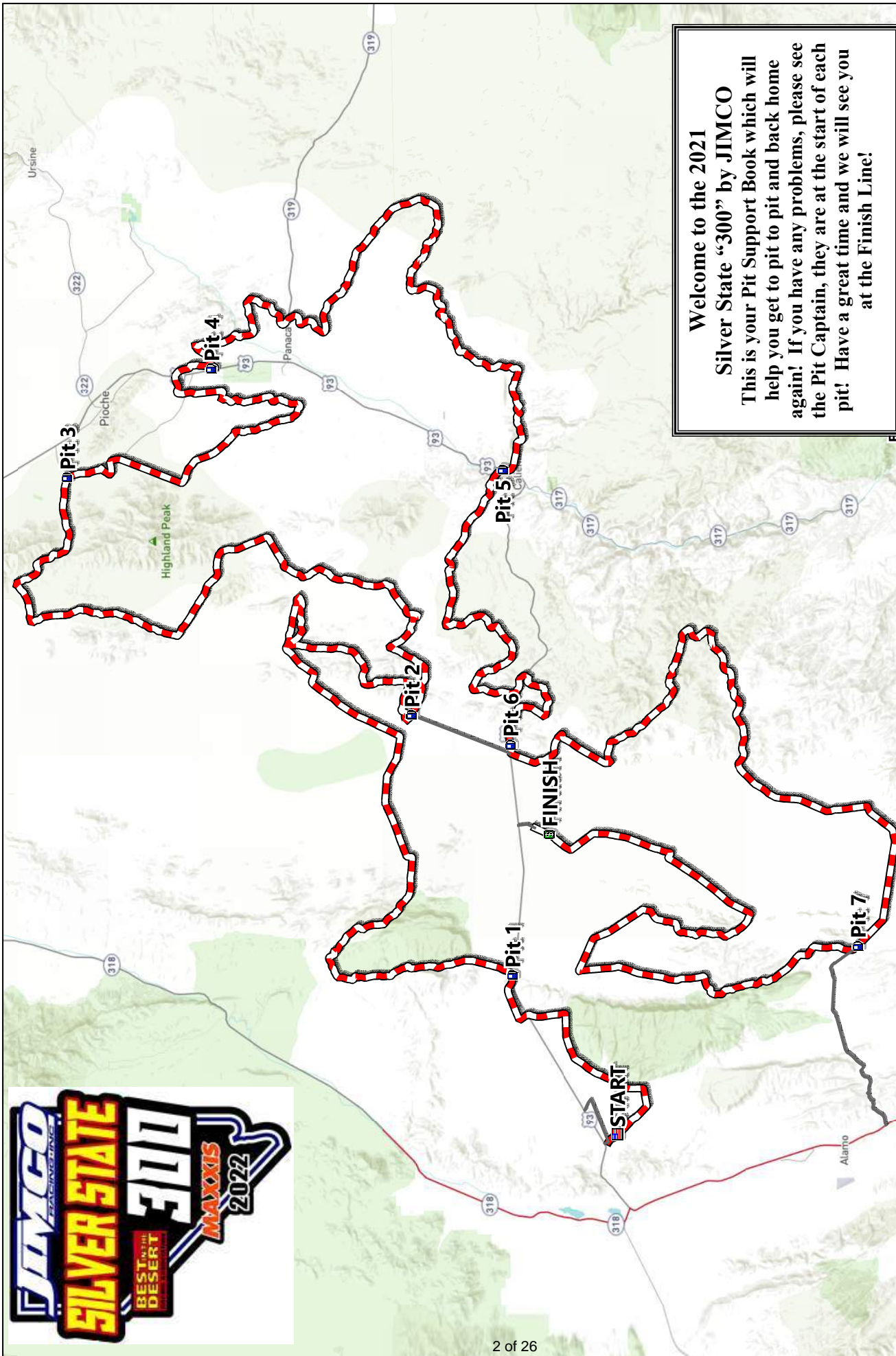
BEST_{IN THE} DESERT RACING ASSOCIATION

SILVER STATE 300

April 30, 2022

PIT SUPPORT BOOK





Welcome to the 2021
Silver State “300” by JIMCO
This is your Pit Support Book which will
help you get to pit to pit and back home
again! If you have any problems, please see
the Pit Captain, they are at the start of each
pit! Have a great time and we will see you
at the Finish Line!



22-SS300-.v1-Pit Map

5 mi

PIT SUPPORT BOOK

SILVER STATE "300" by JIMCO

PIT & RACE COURSE MILEAGE



FROM	TO	RACE COURSE	RACE COURSE	TOTAL
		PIT TO PIT	TOTAL	CHASE MILEAGE
PRIMM, Nv	START			158.0
START	PIT 7 ALAMO CANYON (Remote - 12 miles of Dirt Road)	259.0	259.0	30.0
START	PIT 1 - PAHROC	15.0	15.0	8.4
PIT 1	PIT 2 - DRY LAKE VALLEY (6 miles of Dirt Road)	52.0	67.0	17.1
PIT 2	PIT 3 - CASTLETON	45.0	112.0	45.0
PIT 3	PIT 4 - CATHEDRAL GORGE	26.0	138.0	10.2
PIT 4	PIT 5 - CALIENTE	47.0	185.0	18.1
PIT 5	PIT 6 - DELAMAR	30.0	215.0	17.7
PIT 6	PIT 7 ALAMO CANYON	44.0	259.0	NA
PIT 6	FINISH - CALIENTE AIRPORT	42.0	301.0	4.1

PIT 4 - CATHEDRAL GORGE - NOT RECOMMENDED FOR TRAILERS (No turn around room)

PIT 5 - CASELTON - NOT RECOMMENDED FOR TRAILERS

Special Notes:

1) Pit 7 is a Remote Pit. It is before Alamo, and before the Start Line. We only recommend going to Pit 1 if you have an extra support truck and cannot go 86 miles. From Pit 6 to Pit 7 is 42 miles, and Pit 7 to finish is 44 miles. Alamo Canyon Road is a dirt road.

* We gave you mileage from Las Vegas/Boulder Station to Pit 7 because Pit 7 is before the Start Line; so Pit 7 is 95 miles from Las Vegas on the paved road US-93 and 12.0 miles in on a dirt road for a total of 107. (coming from Las Vegas.)

2) Your pit support truck will not be able to beat the race vehicle from Pit 2 to Pit 3. This will be your only difficulty pitting and this is where you will need a second support truck.

PIT SUPPORT BOOK

SILVER STATE "300" by JIMCO

Pit Support Instructions



- 1 **UNLIMITED** THIS PIT AREA SUITABLE FOR LARGER VEHICLES (MOTOR HOMES, SEMI'S, LARGE TRUCKS, etc.)
- 2 **LIMITED** THIS PIT AREA NOT SUITABLE FOR LARGE VEHICLES (MOTOR HOMES, SEMI'S, LARGE TRUCKS, etc.)
LIMITED ACCESS, SMALL PARKING AND PIT AREA
- 3 **STATIONARY** THERE IS NO IN AND OUT OF A STATIONARY PIT
YOU MUST BE IN BY A DESIGNATED TIME AND CANNOT LEAVE
UNTIL A DESIGNATED TIME OR YOU CANNOT BEAT YOUR RACE VEHICLE
TO ANY PIT BUT THE FINISH
- 4 NO PIT VEHICLES WITHIN 50 FEET OF RACE COURSE, DESIGNATED BY ORANGE LATH OR ORANGE CONES.
- 5 PARK BEHIND ORANGE LATH OR ORANGE CONES ONLY. SEE PIT MAP FOR DETAILS
- 6 NO SPECTATOR PARKING IN PIT PARKING AREA.
- 7 OBEY RACE OFFICIALS AT EACH PIT LOCATION AND ALONG DESIGNATED PIT SUPPORT VEHICLE ROUTE.
- 8 OBEY LINCOLN COUNTY SPEED LIMIT ON DIRT ROADS - IT IS 35 MPH!
- 9 ABSOLUTELY NO PIT VEHICLES ON RACE COURSE.
- 10 RADIO COMMUNICATIONS AND FIRST AID WILL BE AT THE BEGGINING OF EACH PIT NEXT TO THE RACE COURSE. SEE PIT MAP FOR LOCATION.
- 11 **DO NOT SPEED IN PIT AREA** - PIT AREA SPEED LIMIT IS 15 MPH!
- 12 **PLEASE PICK UP TRASH BEFORE YOU LEAVE EACH PIT AREA.**
- 13 REMEMBER ALL ODOMETERS ARE NOT CALIBRATED THE SAME. YOU AND I MAY BE OFF, SO KEEP ALERT!
- 14 VIOLATORS OF ANY OF THE ABOVE INSTRUCTIONS MAY CAUSE PENALTIES FOR THEIR RACE VEHICLE.
- 15 IF YOU HAVE ANY QUESTIONS PLEASE ASK A RACE OFFICIAL FOR CLARIFICATION.
- 16 NO STOPPING, PITTING OR SPECTATING AT NON PIT STOP AREAS, SUCH AS PAVED ROAD CROSSINGS OR ANYWHERE RACE COURSE IS CLOSE TO ROADWAY.
- 17 **REMEMBER, PLEASE DRIVE SAFE AND BE CAREFUL!**

BEST IN THE DESERT

RACING ASSOCIATION

PIT SUPPORT BOOK

SILVER STATE "300" by JIMCO



NOTES



START LINE & OFF-LOAD AREA



PIT SUPPORT BOOK

SILVER STATE "300" by Jimco



LEAVING PRIMM, NV to START LINE at SIX MILE

DIRECTION	NOTE		MILES
PRIMM	HEAD WEST ON EAST PRIMM BLVD TO I-15 RESET ODO TO "0" AT RIGHT TURN ONTO I-15 AT PRIMM, NV		0.0
I-15	CONTINUE NORHT ON I-15 AT I-515/US 93/95 DOWNTOWN LAS VEGAS		42.0
US-93 N US-93 N	TAKE THE US-93 NORTH EXIT 64 TOWARD PIOCHE / ELY TURN LEFT ONTO US-93 HEADING NORTH TO ALAMO		64.0
US-93 N	GLENDALE/MOAPA TURN OFF - GREEN SIGN CONTINUE STRAIGHT ON US-93	< LAS VEGAS ALAMO >	95.0
US-93 N	GREEN SIGN	LINCOLN COUNTY	98.7
US-93 N	GREEN SIGN	ELGIN 38 >	
US-93 N	GREEN SIGN	ALAMO 15 CALIENTE 69 ELY 203	121.8
US-93 N	GREEN SIGN NOTE: THIS IS THE TURN OFF FOR PIT # 1 THIS IS A DIRT ROAD, WE RECOMMEND GOING TO PIT 1 ONLY IF YOU HAVE AN EXTRA PIT TRUCK - MCQ CARRY GAS WITH YOU IF YOU CANNOT GO 75 MILES ON A TANK OF GAS (START TO PIT 1-28.2 MILES, PIT 1 TO PIT 2-44.6 MILES)	BUCKHORN RANCH ROAD	134.9
US-93 N	GREEN SIGN NOTE: SLOW DOWN - 50 mph SPEED LIMIT THRU ALAMO	ALAMO Elev 3450	39.8
US-93 N	ALAMO INN ON THE LEFT (Vern's Place) CONTINUE STRAIGHT 17.0 MILES TO START LINE		140.8
US-93 N	GREEN SIGN	CALIENTE 54 PIOCHE 80	141.8
US-93 N	GREEN SIGN SLOW DOWN - 45 mph SPEED LIMIT THRU ASH SPRINGS	ASH SPRINGS ELEV 3630	147.4
US-93 N	ASH SPRINGS - "R" PLACE SHELL GAS STATION (Good food...)		147.8
US-93 N	NOTE: JUNCTION SR-318 / US-93 CONTINUE STRAIGHT ON US-93 N TO CALIENTE		153.4
US-93 N	TURN RIGHT ONTO DIRT ROAD - "SIX MILE START AREA"		155.8
THE START LINE IS 15 MILES FROM THE ALAMO INN GPS = 37° 32.902'N' - 115° 9.459'W			Race Mile - 0

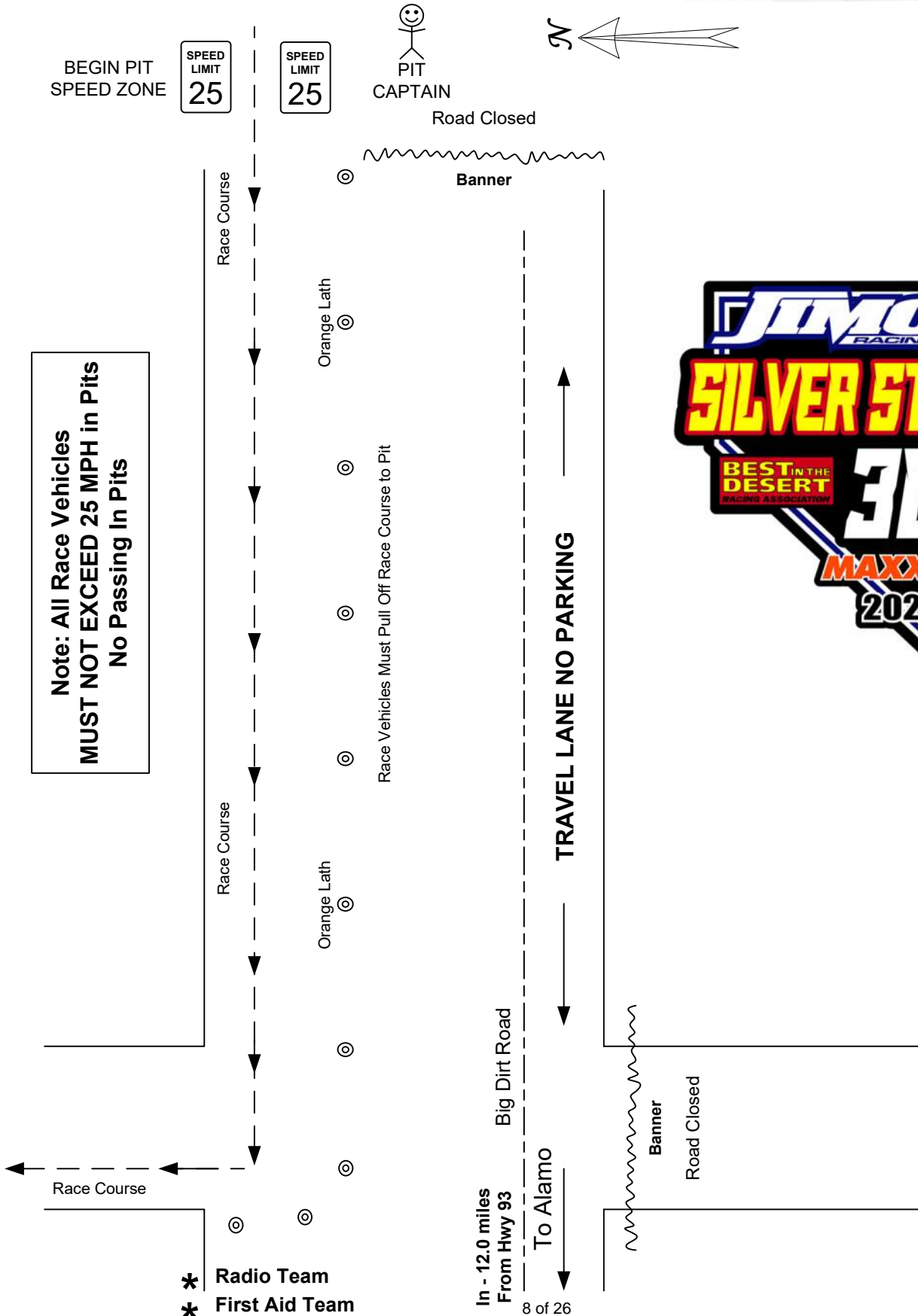
RACERS ~ START YOUR ENGINES!
THIS IS THE START LINE FOR THE SILVER STATE "300" by JIMCO

PIT SUPPORT BOOK

Silver State "300" by Jimco

PIT 7 – ALAMO CANYON

**BEST IN THE
DESERT
RACING ASSOCIATION**



PIT SUPPORT BOOK

SILVER STATE "300" by Jimco



LEAVING PRIMM, NV to PIT # 7 - ALAMO CANYON

REMOTE PIT - PIT 7 IS BEFORE YOU GET TO ALAMO AND BEFORE THE START LINE

DIRECTION	NOTES		MILES
PRIMM	HEAD WEST ON EAST PRIMM BLVD TO I-15 RESET ODO TO "0" AT RIGHT TURN ONTO I-15 AT PRIMM, NV		0.0
I-515 N	CONTINUE NORHT ON I-15 AT I-515/US 93/95 DOWNTOWN LAS VEGAS		42.0
US-93 N US-93 N	TAKE THE US-93 NORTH EXIT 64 TOWARD PIOCHE / ELY TURN LEFT ONTO US-93 HEADING NORTH TO ALAMO		64.0
US-93 N	GLENDALE/MOAPA TURN OFF - GREEN SIGN CONTINUE STRAIGHT ON US-93	< LAS VEGAS ALAMO >	95.0
US-93 N	GREEN SIGN	LINCOLN COUNTY	98.7
US-93 N	GREEN SIGN	ELGIN 38 >	
US-93 N	GREEN SIGN	ALAMO 15 CALIENTE 69 ELY 203	121.8
DIRT ROAD	TURN RIGHT ONTO BUCKHORN RANCH ROAD GPS = N37° 19.984 W115° 8.392	ALAMO CANYON RD	134.9
DIRT ROAD	CONTINUE FOR 12.0 MILES TO PIT # 7 REMOTE PIT - PIT # 1 - ALAMO CANYON GPS = N 37° 21.498 W114° 58.308	Race Mile - 19.1	146.9

RETURN TO US-93 THE WAY YOU CAME IN AND TURN AS NEEDED



PIT SUPPORT BOOK

SILVER STATE "300" by Jimco



LEAVING START SIX MILE to PIT # 1 - PAHROC

DIRECTION	NOTES	MILES
US-93 N	FROM START AREA - FOLLOW POLE LINE TO EAST Approx. 2.5 MILES TURN LEFT FOR 0.7 MILES TO US 93 RESET ODO TO "0" - TURN RIGHT ONTO US 93	0.0
US-93 N	DANGER - RACECOURSE CROSSING - OBEY FLAGMAN **DO NOT STOP or PARK WITHIN 1000 FEET OF RACECOURSE CROSSING THIS IS NOT A SPECTATOR SPOT, RACERS MAY BE PENALIZED FOR SUPPORT CREWS FAILURE TO ABIDE BY THESE RULES	5.8
US-93 N	GREEN SIGN	7.5
	PAHROC SUMMIT ELEV 4961	
US-93 S	SLOW DOWN - PREPARE TO TURN LEFT INTO PIT - ONTO DIRT ROAD WATCH FOR PIT 1 SIGN	8.1
US-93 S	TURN LEFT ONTO DIRT ROAD	8.3
DIRT ROAD	CROSS CATTLE GUARD - PIT 1 ON LEFT	8.4
DIRT ROAD	PIT # 1 - PAHROC SUMMIT GPS = N37 37.358 W114 59.523	Race Mile - 15.0

Note; Total milage with dirt roads from START to Pit 1 = 8.4

MAXXIS
Official Tire
BEST IN THE DESERT
RACING ASSOCIATION

PIT SUPPORT BOOK

Silver State "300" by Jimco

PIT 1 – PAHROC SUMMIT

BEST IN THE DESERT RACING ASSOCIATION



Note: All Race Vehicles
MUST NOT EXCEED 25 MPH in Pits
No Passing In Pits

BEGIN PIT
SPEED ZONE



* Radio Team
* First Aid Team

Race Course

Race Vehicles Must Pull Off Race Course to Pit

Orange Lath

Pit Parking

Pit Parking

Pit Parking

Banner



In - 8.4 miles

Out - Reset 0.0



@ 1,000'



@ 1,000'

From Start Line

US-93

To: Pit,3,4,5,6t 2



@ 1,000'



@ 500'



PIT SUPPORT BOOK

SILVER STATE "300" by Jimco



LEAVING PIT 1 PAHROC to PIT 2 - DRY LAKE VALLEY

DIRECTION	NOTES	MILES
PIT 1	RETURN TO US-93 SOUTH ON DIRT ROAD TURN LEFT (EAST) ON US-93 NORTH TOWARDS CALIENTE	
US-93 N	RESET ODO TO "0" - TURN LEFT ONTO US 93	0.0
US-93 N	DIRT ROAD ON RIGHT IS FINISH LINE	7.8
US-93 N	GREEN SIGN	10.9
US-93 S	SLOW DOWN - PREPARE TO TURN LEFT INTO PIT - ONTO DIRT ROAD WATCH FOR PIT 2 SIGN	11.5
US-93 S	TURN LEFT ONTO DIRT ROAD	11.6
DIRT ROAD	CROSS CATTLE GUARD CONTINUE ON DIRT ROAD FOR 5.4 MILES	11.7
DIRT ROAD	ARRIVE AT PIT	17.1

PIT 2 - DRY LAKE VALLEY

Race Mile - 67

GPS = 37° 41.758'N, 114° 44.779'W

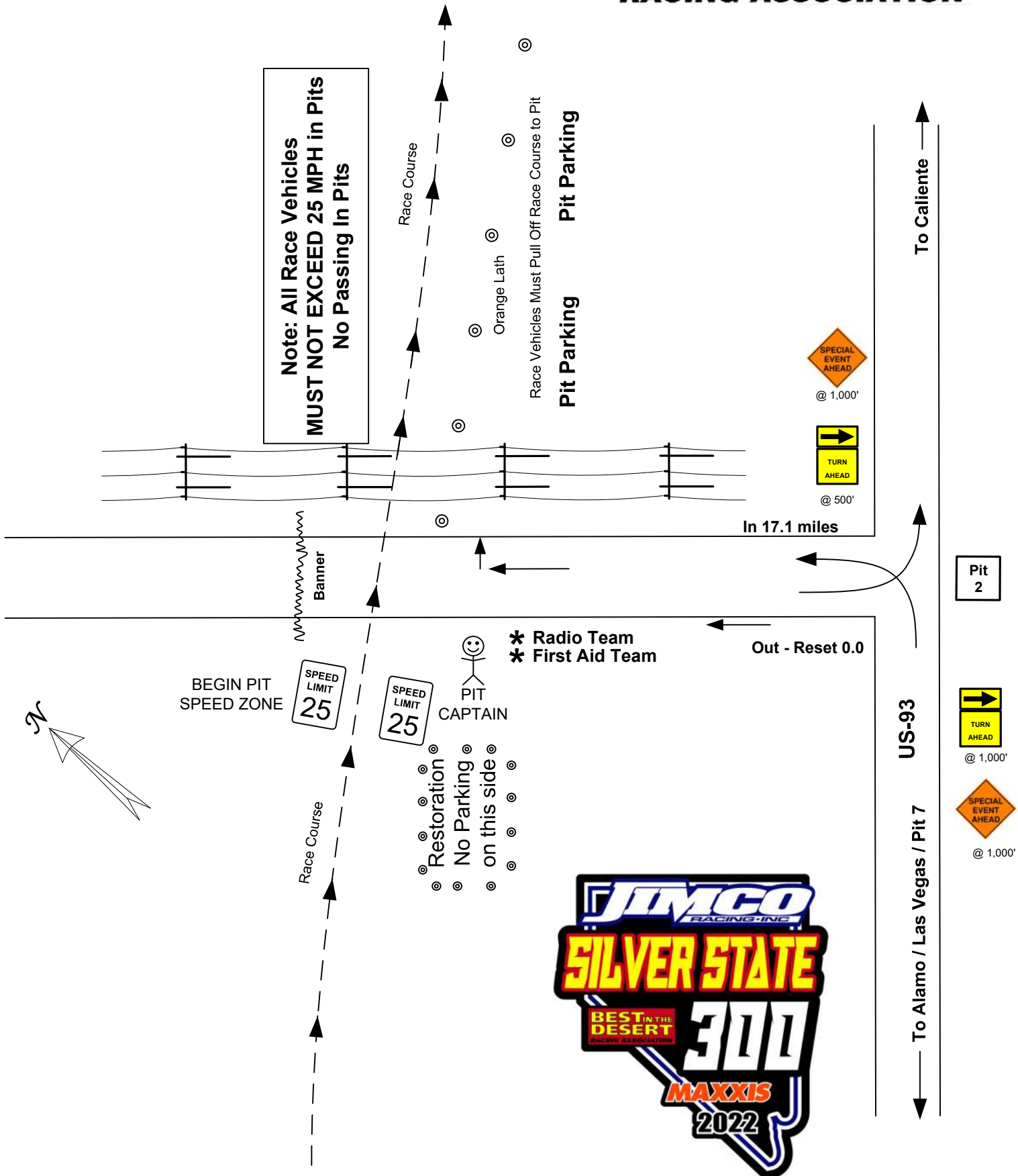


PIT SUPPORT BOOK

Silver State "300" by Jimco

PIT 2 – DRY LAKE VALLEY

BEST IN THE DESERT RACING ASSOCIATION



PIT SUPPORT BOOK

SILVER STATE "300" by Jimco



LEAVING PIT 2 - DRY LAKE VALLEY to PIT 3 CASTLETON

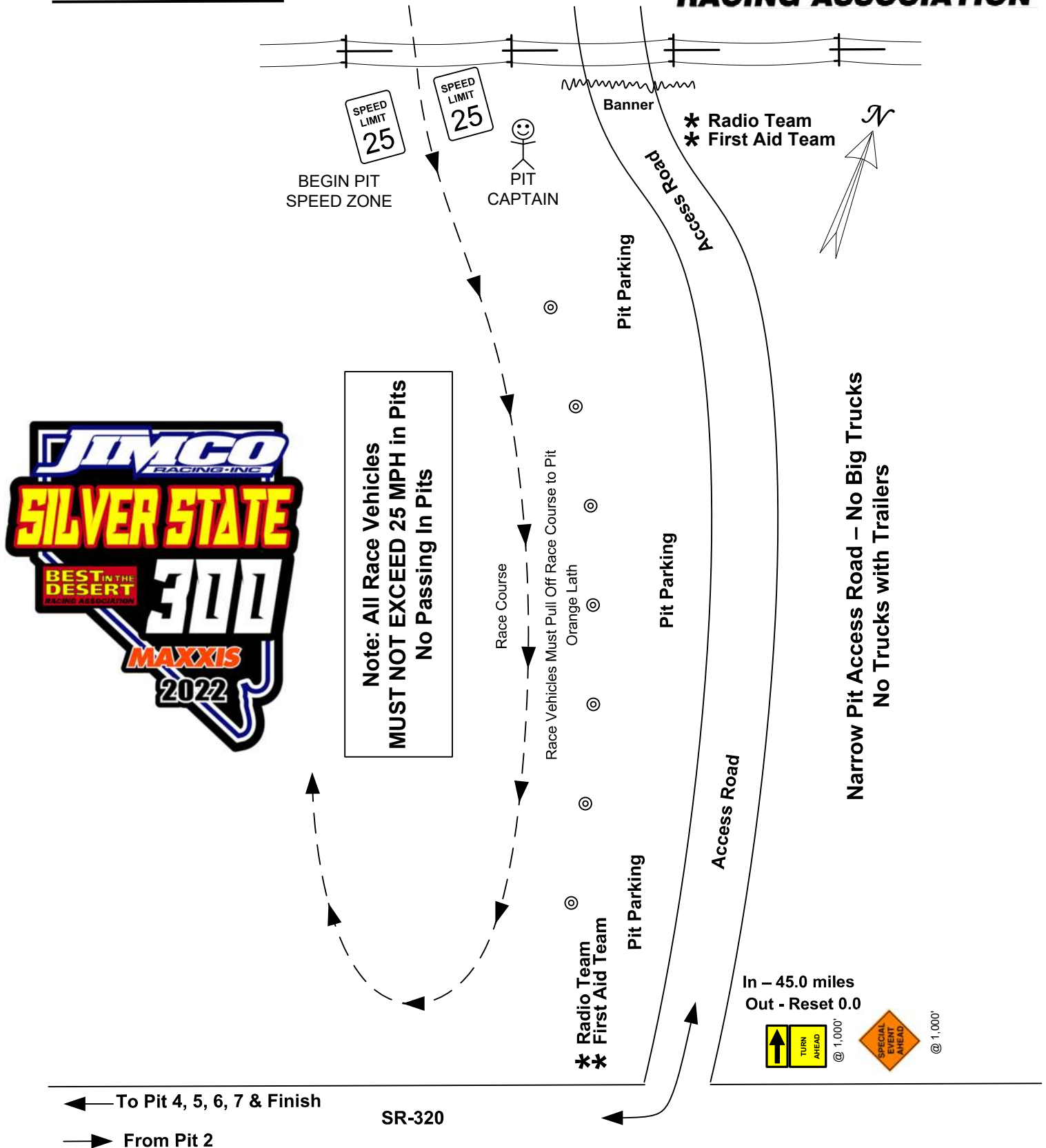
DIRECTION	NOTES	MILES
PIT 2	RETURN 5.5 MILES ON DIRT ROAD TO US-93 SOUTH TURN LEFT (EAST) ON US-93 NORTH TOWARDS CALIENTE	0.0
US-93 N	DIRT ROAD TO RIGHT IS PIT 6 DELAMAR	0.3
US-93 N	DANGER - RACECOURSE CROSSING - OBEY FLAGMAN **DO NOT STOP or PARK WITHIN 1000 FEET OF RACECOURSE CROSSING THIS IS NOT A SPECTATOR SPOT, RACERS MAY BE PENALIZED FOR SUPPORT CREWS FAILURE TO ABIDE BY THESE RULES	4.3
US-93 N	GREEN SIGN	6.0
	OAK SPRINGS SUMMIT ELEV 6237	
US-93 N	GREEN SIGN DRIVE SLOWLY THROUGH CALIENTE 25 MPH SPEED LIMIT IN CALIENTE	16.0
	CALIENTE ELEV 4398	
US-93 N	SINCLAIR GAS STATION ON LEFT - ONLY GAS and DIESEL IN CALIENTE J&J FAST FOOD (GOOD HAMBURGERS & SOFT SERVE ICE CREAM CONES)	16.6
US-93 N	STREET CURVES LEFT (RR yard on right, continue 3/4 mile)	17.1
US-93 N	AGUA CALIENTE RV PARK ON THE LEFT	17.8
US-93 N	DANGER - RACECOURSE CROSSING - OBEY FLAGMAN **DO NOT STOP or PARK WITHIN 1000 FEET OF RACECOURSE CROSSING THIS IS NOT A SPECTATOR SPOT, RACERS MAY BE PENALIZED FOR SUPPORT CREWS FAILURE TO ABIDE BY THESE RULES	17.9
US-93 N	DIRT ROAD TO LEFT IS PIT 5 CALIENTE	18.0
US-93 N	BROWN SIGN	22.8
	BEAVER DAM STATE PARK	
US-93 N	PANACA JCT. US-93 AND SR-319 SHELL GAS STATION ON LEFT - DIESEL AVAILABLE	30.9
US-93 N	BROWN SIGN ON THE RIGHT	33.9
	MILLER POINT <	
US-93 N	DIRT ROAD ON RIGHT IS PIT 4 CATHEDRAL GORGE	34.8
US-93 N	SLOW DOWN - PREPARE TO TURN LEFT ON SR-320	35.8
SR-320	TURN LEFT ON TO SR-320	35.9

PIT SUPPORT BOOK

Silver State "300" by Jimco

PIT 3 – CASELTON

BEST IN THE DESERT RACING ASSOCIATION



PIT SUPPORT BOOK

SILVER STATE "300" by Jimco



LEAVING PIT 2 to PIT 3 CONT.

DIRECTION	NOTES	MILES
SR-320	DANGER - RACECOURSE CROSSING - OBEY FLAGMAN **DO NOT STOP or PARK WITHIN 1000 FEET OF RACECOURSE CROSSING THIS IS NOT A SPECTATOR SPOT, RACERS MAY BE PENALIZED FOR SUPPORT CREWS FAILURE TO ABIDE BY THESE RULES	37.0
SR-320	CATTLE GUARD	44.6
SR-320	SLOW DOWN - PREPARE TO TURN LEFT	44.9
SR-320	TURN LEFT - PIT IS NARROW PIT IS ON THE ROAD - BACK IN TO THE RACECOURSE	45.0

PIT # 3 - CASELTON

Race Mile - 112

GPS = N37 57.473 W114 30.921

**NOTE: PIT IS NOT RECOMMENDED FOR TRUCKS WITH TRAILERS, BIG TRAILERS
OR 18-WHEELERS - NO WAY TO TURN AROUND YOU WILL JACK KNIFE**

HISTORICAL NOTE:

YOU CAN SEE THE CASELTON PRINCE MINE FROM THE ROAD - THIS WAS A VERY
ACTIVE GOLD MINE FROM 1868-1932



PIT SUPPORT BOOK

Silver State "300" by Jimco

PIT 4 – CATHEDRAL GORGE

BEST IN THE DESERT RACING ASSOCIATION



Note: All Race Vehicles
MUST NOT EXCEED 25 MPH in Pits
No Passing In Pits



Race Course

Race Vehicles Must Pull Off Race Course to Pit

Orange Lath

Out -
Reset 0.0



To Pit 5, 6, 7
& Finish

Pit
3

In - 10.2
miles

Pit Parking

US-93

In - 10.2
miles

Pit Parking

Out - Reset 0.0

Pit
3



@ 1,000'



@ 1,000'

From
Pit 3

Pioche

* Radio Team
* First Aid Team

PIT
CAPTAIN

BEGIN PIT
SPEED ZONE

SPEED
LIMIT
25

17 of 22

SPEED
LIMIT
25



PIT SUPPORT BOOK

SILVER STATE "300" by Jimco



LEAVING PIT 3 CASTLETON TO PIT 4 CATHEDRAL GORGE

DIRECTION	NOTES	MILES
PIT 3	LEAVE PIT 3 - HEAD SOUTH ON SR-320 RESET ODO TO "0" AT PAVEMENT	0.0
SR-320	CONTINUE SOUTH ON SR-320 - HEADING BACK TOWARDS US-93 / CALIENTE	
SR-320	CATTLE GUARD	0.4
SR-320	DANGER - RACECOURSE CROSSING - OBEY FLAGMAN **DO NOT STOP or PARK WITHIN 1000 FEET OF RACECOURSE CROSSING THIS IS NOT A SPECTATOR SPOT, RACERS MAY BE PENALIZED FOR SUPPORT CREWS FAILURE TO ABIDE BY THESE RULES	7.9
SR-320	STOP SIGN - TURN RIGHT ONTO US-93 S	9.0
US-93 N	SLOW DOWN - PREPARE TO TURN LEFT	10.1
US-93 N	TURN LEFT - PIT IS NARROW PIT IS ON THE ROAD - BACK IN TO THE RACECOURSE	10.2
PIT 4 CATHEDRAL GORGE		Race Mile - 139
GPS = N37 50.835 W114 24.813		



PIT 5 – CALIENTE

BEST IN THE DESERT RACING ASSOCIATION



PIT SUPPORT BOOK

SILVER STATE "300" by Jimco



LEAVING PIT 4 CATHEDRAL GORGE to PIT 5 CALIENTE

DIRECTION	NOTES	MILES
US-93 S	LEAVE PIT 4 - TURN LEFT HEAD SOUTH ON US 93 RESET ODO TO "0" AT PAVEMENT	0.0
US-93 S	PANACA JCT. US-93 AND SR-319 SHELL GAS STATION ON RIGHT - CONTINUE STRAIGHT TO CALIENTE	3.9
US-93 S	BROWN SIGN	11.9
	BEAVER DAM STATE PARK	
US-93 N	SLOW DOWN - PREPARE TO TURN RIGHT	18.0
US-93 N	TURN RIGHT ONTO PAVED ROAD INTO PIT	18.1
	PIT # 5 - CALIENTE	Race Mile - 185
	GPS = 37° 37.593'N, 114° 30.627'W	

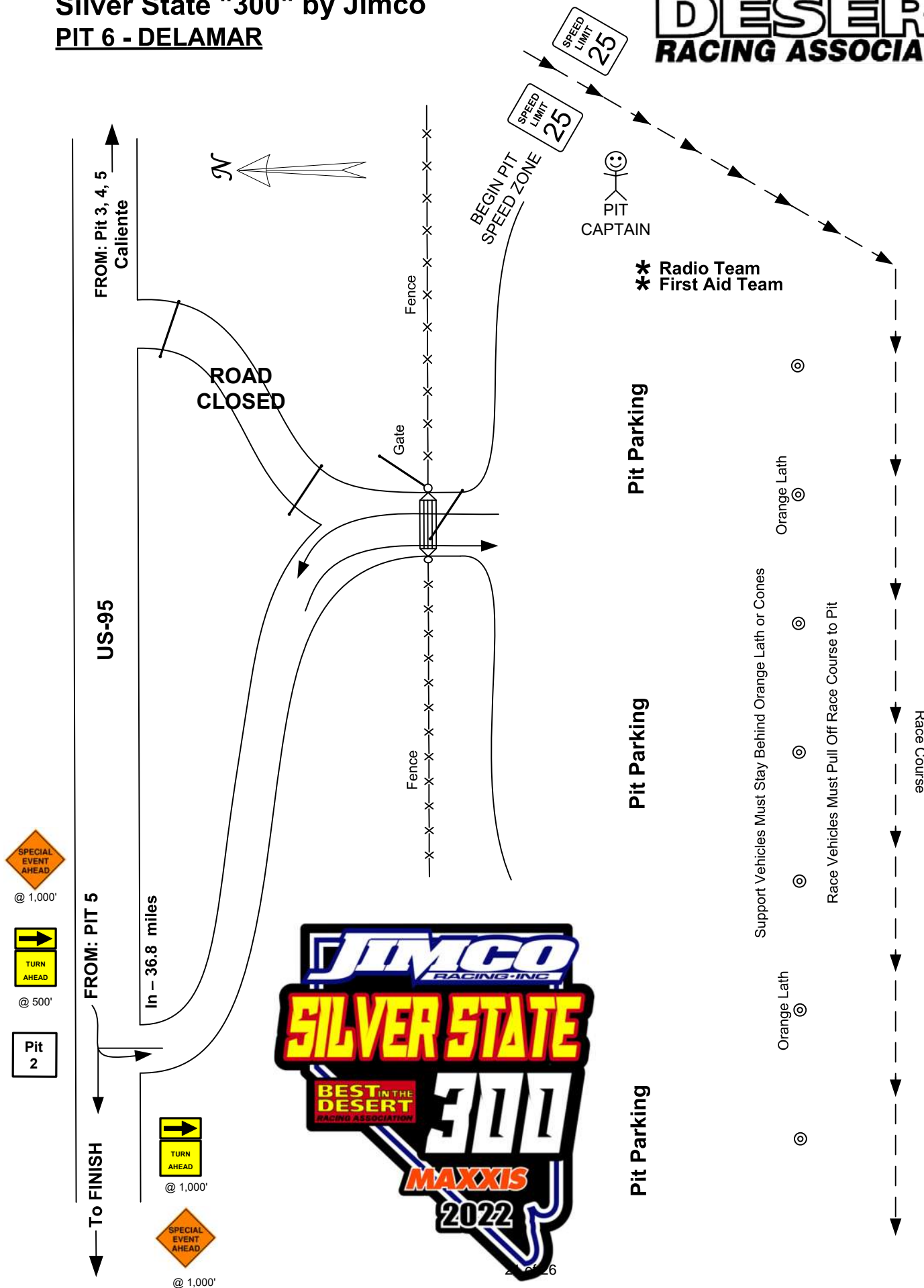


PIT SUPPORT BOOK

Silver State "300" by Jimco

PIT 6 - DELAMAR

BEST IN THE DESERT RACING ASSOCIATION



**Note: All Race Vehicles
MUST NOT EXCEED 25 MPH in Pits
No Passing In Pits**



PIT SUPPORT BOOK

SILVER STATE "300" by Jimco



LEAVING PIT 5 CALIENTE to PIT 6 DELAMAR

DIRECTION	NOTES	MILES
US-93 S	LEAVE PIT 5 - TURN RIGHT - HEAD SOUTH ON US 93 RESET ODO TO "0" AT PAVEMENT	0.0
US-93 S	DANGER - RACECOURSE CROSSING - OBEY FLAGMAN **DO NOT STOP or PARK WITHIN 1000 FEET OF RACECOURSE CROSSING THIS IS NOT A SPECTATOR SPOT, RACERS MAY BE PENALIZED FOR SUPPORT CREWS FAILURE TO ABIDE BY THESE RULES	0.1
US-93 S	HOSPITAL ON THE RIGHT	0.4
US-93 S	CONTINUE THROUGH THE TOWN OF CALIENTE ONTO US-93 S DRIVE SLOWLY THROUGH CALIENTE 25 MPH SPEED LIMIT IN CALIENTE NOTE: YOU ARE GOING TO BE HEADING BACK TOWARDS ALAMO THE WAY YOU CAME FROM THE START LINE	
US-93 S	GREEN SIGN	12.0
	OAK SPR SUMMIT ELEV 6237	
US-93 S	DANGER - RACECOURSE CROSSING - OBEY FLAGMAN **DO NOT STOP or PARK WITHIN 1000 FEET OF RACECOURSE CROSSING THIS IS NOT A SPECTATOR SPOT, RACERS MAY BE PENALIZED FOR SUPPORT CREWS FAILURE TO ABIDE BY THESE RULES	13.7
US-93 N	SLOW DOWN - PREPARE TO TURN RIGHT	17.6
US-93 N	TURN LEFT ON DIRT ROAD	17.7
	PIT # 6 - DELAMAR	Race Mile 215
	GPS = N37 37.167 W114 46.642	

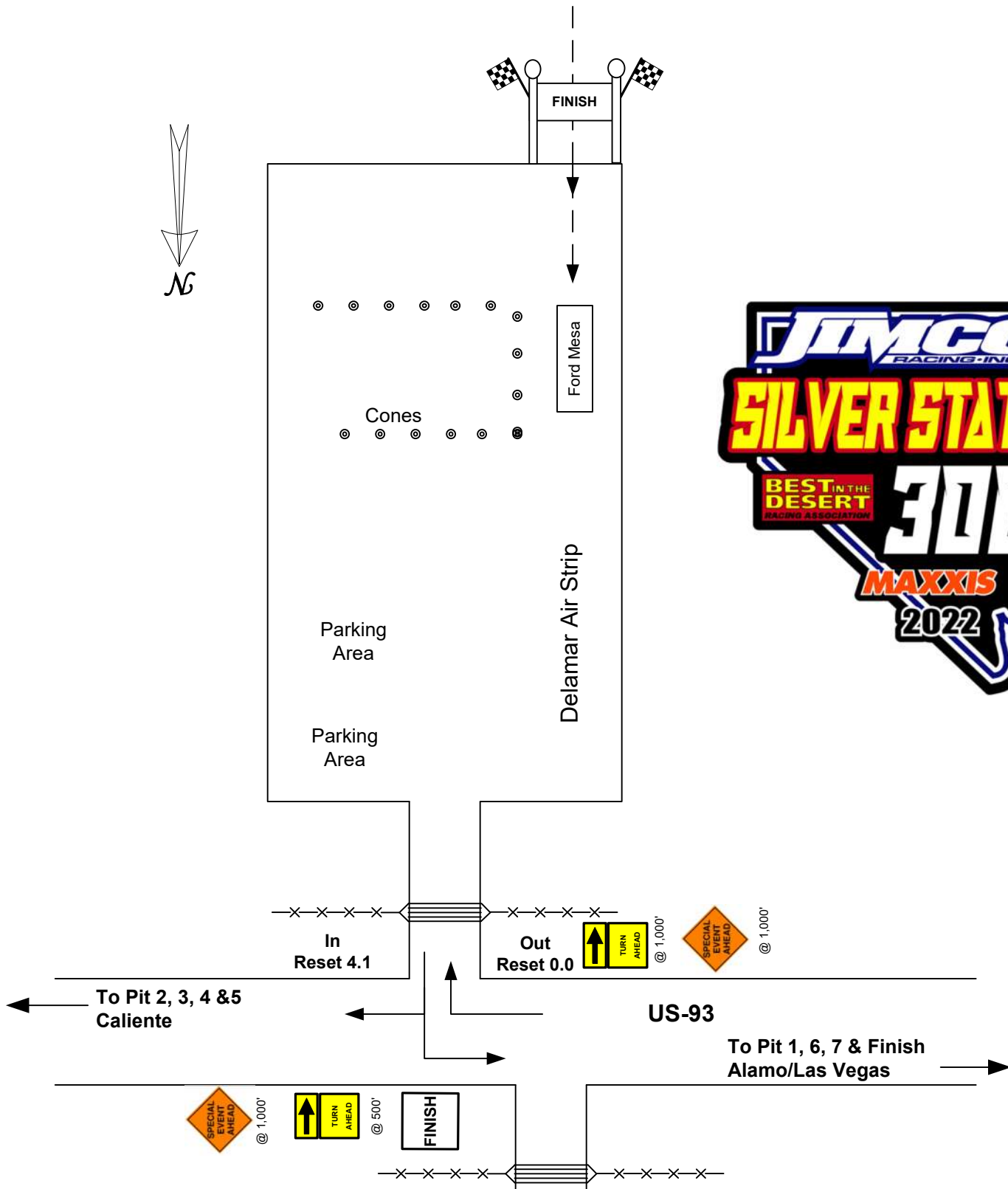


PIT SUPPORT BOOK

Silver State "300" by Jimco

FINISH LINE

**BEST IN THE
DESERT
RACING ASSOCIATION**



PIT SUPPORT BOOK

SILVER STATE "300" by Jimco



LEAVING PIT 6 DELAMAR to FINISH CALIENTE AIRPORT

DIRECTION	NOTES	MILES
US-93 S	LEAVE PIT 6 - TURN LEFT - HEAD EAST ON US 93 RESET ODO TO "0" AT PAVEMENT	0.0
US-93 S	DIRT ROAD TO RIGHT - TO PIT 2	0.3
US-93 N	SLOW DOWN - PREPARE TO TURN RIGHT	4.0
US-93 N	TURN LEFT ON DIRT ROAD - CROSS CATTLE GUARD	4.1
DIRT ROAD	TURN RIGHT - AIRSTRIP - PARK as per SIGNAGE	

FINISH - CALIENTE AIRPORT

Race Mile 301

GPS = N37° 36.863' W114° 51.126

**CONGRATULATIONS !!! YOU HAVE JUST COMPLETED THE
SILVER STATE "300" by JIMCO
WE THANK YOU FOR YOUR SUPPORT AND LOOK FORWARD TO SEEING YOU AGAIN
THANK YOU TO ALL OF OUR SPONSORS**



PIT SUPPORT BOOK

SILVER STATE "300" by Jimco



LEAVING THE FINISH LINE BACK TO PRIMM, NV

DIRECTION	NOTES	MILES
	YOU ARE HEADING BACK TO LAS VEGAS THE SAME WAY YOU CAME	
FINISH	EXIT THE FINISH LINE AREA - TURN LEFT ONTO US-93 SOUTH	
US-93 S	CONT. ON US 93 - PIT 1 ON RIGHT	7.8
US-93 S	CONT. ON US 93 - START AREA ON LEFT	18.0
US-93 S	GREEN SIGN - APPROACHING JUNCTION 318 CONTINUE STRAIGHT ON US-93 SOUTH	<div><div>^ ALAMO</div><div>HIKO ></div></div> 21.0
US-93 S	WATCH SPEED THROUGH ASH SPRINGS - 45 MPH	26.9
US-93 S	GREEN SIGN	<div>ASH SPRINGS ELEV 3630</div> 27.0
US-93 S	DRIVE SLOW THROUGH ALAMO - 50 MPH	33.1
US-93 S	GREEN SIGN - JUNCTION SR-168	<div>^ LAS VEGAS < GLENDALE</div> 76.6
US-93 S	GAS STATION ON RIGHT "LOVES" - THEY HAVE DIESEL	107.0
US-93 S	SLOW DOWN - PREPARE TO TURN RIGHT ONTO I-15 TOWARDS LAS VEGAS	107.1
I-15	CONTINUE SOUTH ON I-15 AT I-515/US 93/95 DOWNTOWN LAS VEGAS	129.0
I-15	TAKE OFF-RAMP EXIT 1 - PRIMM, NV	171.0
	GPS = 35° 36.742'N, 115° 23.395'W	

HAVE A SAFE TRIP BACK TO PRIMM, NV

SEE YOU AT THE AWARDS TOMORROW MAY 1 AT PRIMM VALLEY RESORTS
10:00AM to 12:00PM - CONTINENTAL BREAKFAST - 12:00PM to 1:00PM AWARDS

NEXT RACE - 2022 Method Race Wheels "Casey Folks" Vegas to Reno
AUGUST 10-13, 2022

PIT SUPPORT BOOK

SILVER STATE "300" by JIMCO



NOTES

